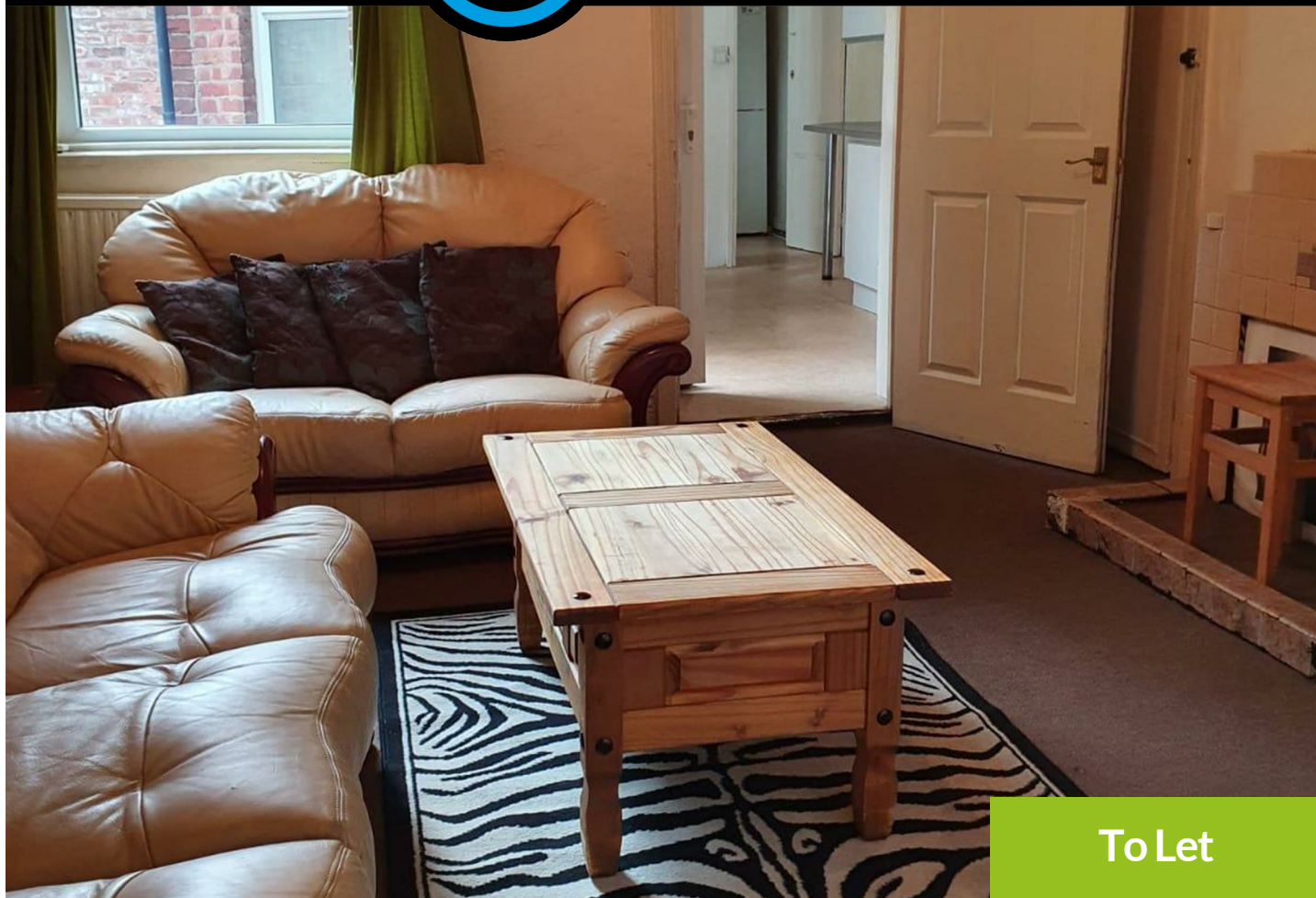




**WALTON
ROBINSON**



To Let

45 Lonsdale Terrace, Jesmond NE2 3HQ

£1,216 PCM



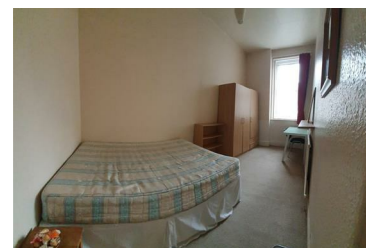
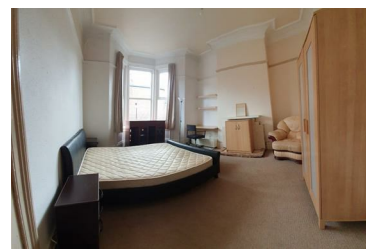
Two bedroom flat to let is located a few minutes walk from West Jesmond Metro, and close to a range of excellent shops, bars and restaurants Jesmond has to offer. An ideal area for students.

Internally there is a lounge, fitted kitchen with a oven hob, fridge freezer, washing machine and a microwave. The bathroom offers a bath with over head shower, basin and w.c. To the rear there is a yard perfect for summer barbecues.

There is a monthly clean included within the price.

****All property descriptions are assumed correct at time of publication. Any reference to property details, specifications or other inclusions are subject to change and may be altered at any given time.**

- £140PPPW
- Two Double Bedrooms
- Spacious Lounge
- Extremely Close to West Jesmond Metro
- Rear Yard
- Ground Floor Flat
- Fully Furnished
- Central Jesmond Location
- Permit Parking Available
- Available 13/07/2026 - 12/07/2027



101 Percy Street, City Centre, Newcastle upon Tyne, NE1 7RY

T: 01912431000 | Email: enquiries@seekersproperty.co.uk | www.waltonrobinson.com